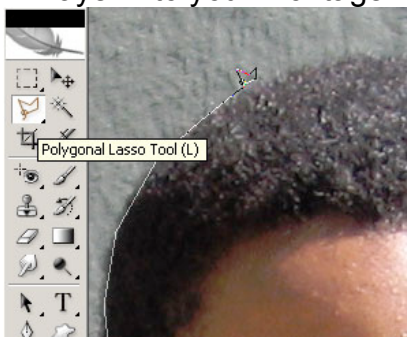


# Techniques to Cutout Objects in Photoshop

## Polygonal Lasso Tool

The Polygonal Lasso tool draws straight lines between clicks to create a selection.

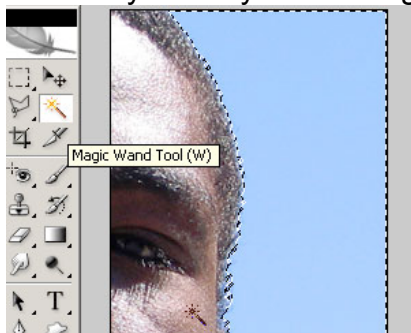
1. Select the Polygon Lasso Tool. In the Layer Window, select the layer with the object/person you wish you cut out.
2. Starting at the edge of your object, draw a path around the border using multiple clicks.
3. Complete the selection by clicking at the start of your selection, making a complete circle.
4. To create a new layer out of your new selection press “Ctrl-J”. Drag your layer into your montage.



## Magic Wand Tool

The magic wand tool creates a selection based on the surrounding colors of where it is used. If the object you want to select is a different color from the background, it can be very easy to separate the two.

1. Select the magic wand tool. Select the layer containing the object you wish to select.
2. In your photo, click on the different colored background behind your object.
3. Adjust the Tolerance in the toolbar options menu. Tolerance affects the amount of similar colors the magic wand tool selects.
4. Once the background is selected inverse the selection. In the menu “Select | Inverse”
5. To create a new layer out of your new selection press “Ctrl-J”. Drag your layer into your montage.



## Quick Mask Mode

Quick mask mode allows the user to paint using black and white to “draw” their selection. By painting and erasing your selection, mistakes can be fixed. Quick Mask Mode can take longer, but gives you more accuracy.

1. Select the layer containing the object you wish to select. Click 'Edit Quick Mask Mode'.
2. Press 'D' to set your colors to the default (Black and White)
3. Select the paintbrush tool. Paint the areas you do NOT want selected. The painted areas appear red.
4. To view your selection: Click 'Edit in Standard Mode' to switch back from 'Quick Mask Mode'
5. Alternate between Standard Mode and QuickMask mode, painting and erasing to create a perfect selection. Try sharp and fuzzy paintbrushes to create smooth selections.
6. To create a new layer out of your new selection press “Ctrl-J”. Drag your layer into your montage.

